

# Degree Path: B.A. in Theatre Education

## College of Business and Education

### Freshman Year

Fall Semester	15 hours
GES 1122	Strategies for Student Success ∞
ENG 1113	Composition and Rhetoric I ∞
BIO 1113	Biology ∞
BIO 1111	Biology Lab ∞ (PHY 1111, if preferred, accompanies PHY 1113)
HIS 1113	American History I ∞
BIB/REL/THE	(Bible Core option) ∞

Spring Semester	16 hours
COM 1143	Fundamentals of Speech Communication ∞
ENG 1123	Composition and Rhetoric II ∞ (prereq: ENG 1113)
HIS 1123	American History II ◇
MTH 1123	College Algebra ∞
DRA 2211	Play Production ∞
BIB/REL/THE	(Bible Core option) ∞

### Sophomore Year

Fall Semester	16 hours
HUM 1113	Introduction to Fine Arts ◇
DRA 2233	The Art of Storytelling ◇
DRA 2211	Play Production ∞
DRA 2123	Fundamentals and Theories of Acting *
EDU 2253	Foundations of Education *
BIB/REL/THE	(Bible Core option) ∞

Spring Semester	18 hours
ENG 2273	Intro to Literature ∞ (prereq: ENG 1123)
DRA 2333	Theatrical Movement **
PHY 1113	Physical Science ∞
PSY 1153	Intro to Psychology ∞
DRA XXX3	(Major Elective option 1)
BIB/REL/THE	(Bible Core option) ∞

### Junior Year

Fall Semester	18 hours
GOV 2213	National & State Government ∞
EDP 3423	Classroom Management ∞
DRA 3123	History of Drama **
DRA XXX3	(Major Elective option 2)
XXX XXXX	(General Elective Course option)
BIB/REL/THE	(Bible Core option) ∞

Spring Semester	17 hours
EDP 3143	Instructional Technology ◇
DRA 2211	Play Production ∞
DRA 3153	Advanced Theories of Acting I*
DRA XXX3	(Major Elective option 3)
EDP 4111	Educator Assessment ∞
EDU 4273	Advanced Strategies for Teaching ◇
BIB/REL/THE	(Bible Core option) ∞

### Senior Year

Fall Semester	15 hours
EDU 4563	Special Issues and Populations ∞
EDU 4353	Teaching Theatre Arts ◇
EDP 3323	Research, Theory, & Practice for ELLs ∞
DRA 2233	Stage Makeup *
DRA XXX3	(Major Elective option 4)

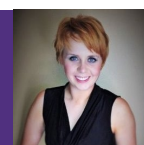
Spring Semester	12 hours
RDG 4513	Content & Discipl. Literacy ***
EDU 4479	Student Teaching All Level ***

#### Please Note:

- This plan is one example of how to complete the degree in 4 years. It assumes no transfer credit and no developmental coursework. It will work for some, but not for all.
- You can meet with your scheduler, program coordinator, or department chair to plan around your circumstances and develop your personal degree path. Degree requirements and offerings are subject to change, so consult advisors for on-going updates.
- Course Offering Codes:
  - ∞ every fall and spring semester
  - \* only that semester in odd years
  - \*\*\* to be taken *only* in specified semester
  - ◇ every year only fall/spring/summer (as listed)
  - \*\* only that semester in even years
  - ∞/◇ offering differs in order listed



Your Program Coordinator:  
Professor Jacqueline Cabrera  
Professor of Theatre  
[jcabrera@nelson.edu](mailto:jcabrera@nelson.edu)



# Degree Path: B.A. in Theatre Education

## College of Business and Education

### OVERVIEW

The BA in Theatre Education is designed to prepare students to teach theatre in the elementary, middle and secondary classrooms in a variety of settings including public, charter and private schools. Additionally, it includes a pathway to Texas State Educator Certification. Students in the Theatre Education degree program take courses designed to develop content proficiency in all areas taught by Theatre Arts teachers in grades K through 12. The program includes extensive field experience in classrooms representing varied settings as well as a clinical teaching experience during the final semester.

### CAREER OPPORTUNITIES

Graduates of the Theatre Arts K-12 program who have completed all program and certification requirement are qualified and certified to teach Theatre Arts in grade levels K-12. Also, graduates have additional training in teaching English language learners and the opportunity for ESL Supplemental certification.

### PROGRAM HIGHLIGHTS

The Theatre Education K-12 degree is part of the Teacher Education Program. Upon completing 60 hours of credit, students must apply to be admitted to the Teacher Education Program. Program requirements are detailed in the academic catalog. Some courses in the degree plan require program approval prior to enrollment. These courses include:

- EDU 4263 Teaching Theatre Arts
- EDU 4273 Advanced Strategies for Teaching
- EDU 4563 Special Issues and Populations
- EDU 4989 Clinical Teaching Middle and Secondary

One of the highlights of our program is the opportunity for students to engage in the local school communities by completing field experience. Students visit and participate with assigned classrooms at varied grade levels and subjects in area school districts. Courses within this degree that require field experience include:

- EDU 2253 Foundations of Education
- EDU 4263 Teaching Theatre Arts
- EDU 4273 Advanced Strategies for Teaching
- EDU 4563 Special Issues and Populations
- EDU 3453 Adolescent Literacy Instruction

### PROGRAM REQUIREMENTS

#### GENERAL EDUCATION STUDIES 57 Hours

##### General Education: 14 hours

- ☐ COM 1143 Fundamentals of Speech Communication
- ☐ ENG 1113 Composition and Rhetoric I
- ☐ ENG 1123 Composition and Rhetoric II
- ☐ ENG 2273 Introduction to Literature
- ☐ GES 1122 Strategies for Student Success

##### Social/Behavioral Sciences: 12 hours

- ☐ GOV 2213 National and State Government
- ☐ HIS 1113 American History I
- ☐ HIS 1123 American History II
- ☐ PSY 1153 Introduction to Psychology

##### Natural Science/Mathematics: 10 hours

- ☐ BIO 1113 Biological Sciences
- ☐ PHY 1113 Physical Science
- ☐ 1 hour from the following:
  - BIO 1111 Introduction to Biology Lab **OR**
  - PHY 1111 Physical Science Lab
  - MTH 1123 College Algebra

##### Humanities/Fine Arts: 3 hours

- ☐ HUM 1133 Introduction to Fine Arts

##### Elective Studies: 3 hours

##### General Biblical Studies: 18 hours

- ☐ BIB 1223 The Church in Ministry and Mission
- ☐ BIB 2213 Bible Study
- ☐ REL 1133 Authentic Christianity
- ☐ REL 1173 Introduction to Biblical Literature
- ☐ THE 2113 Introduction to Theology and Apologetics
- ☐ THE 2333 Pentecostal Doctrine and History

#### MAJOR STUDIES 67 Hours

##### Core Studies: 33 hours

- ☐ DRA 2123 Fundamentals and Theories of Acting
- ☐ DRA 2211 Play Production (3 semesters)
- ☐ DRA 2223 The Art of Storytelling
- ☐ DRA 2333 Theatrical Movement
- ☐ DRA 2233 Stage Makeup
- ☐ DRA 3123 History of Drama
- ☐ DRA 3153 Advanced Theories of Acting I
- ☐ Select 12 hours from the following
  - DRA 3133 Directing for Theatre
  - DRA 3163 Advanced Theories of Acting II
  - DRA 3343 Voice and Diction
  - DRA 3353 Script Analysis
  - DRA 4123 Theatrical Design
  - DRA 4133 Dramaturgy
  - DRA 4243 Advanced Theories of Acting III

##### Combination Area: 13 hours

- ☐ EDP 3323 Research, Theory, and Practice for ELLs
- ☐ EDP 3413 Instructional Technology
- ☐ EDP 3423 Classroom Management
- ☐ EDP 4111 Educator Assessment
- ☐ RDG 4513 Content and Disciplinary Literacy Instruction

##### Professional Development: 21 hours

- ☐ EDU 2253 Foundations of Education
- ☐ EDU 4273 Advanced Strategies for Teaching
- ☐ EDU 4353 Teaching Theatre Arts
- ☐ EDU 4563 Special Issues and Populations
- ☐ EDU 4979 Clinical Teaching Middle/Secondary

#### TOTAL PROGRAM REQUIREMENTS 127 Hours

